



# Directions to Alstrom Point

July 17, 2015

Written by Vin Paitoon, photos by Derrick Boyce  
Special thanks to Chuck Serventi

AlstromPoint.com

## Things to Know

- Bring plenty of water. Alstrom Point is very remote and the chances of running into help are slim
- Cell phone coverage is spotty, but useable. Look for higher ground, and use texts instead of voice
- Strong consider rescheduling if it is or has recently rained. The roads quickly become impassible and flash flooding very possible at the washes
- High clearance is necessary to get to the best overlook. However, 2wd vehicles can make it 98% of the way.
- Night skies at Alstrom Point are some of the best in the USA

## How to get to Alstrom Point

Alstrom Point is the best viewing location of Lake Powell that you can drive too. Follow these directions to get there.

From Page, drive 14.4 miles north on US 89 to Ethan Allen Way in Big Water and set your odometer to 0.0



1 Turn onto Ethan Allen Way and set odometer to 0.0



2 Go straight on Ethan Allen Way, use the parking lot on the right to offload ATV's if you are using them.



3 0.3 miles, Turn right onto Glen Canyon National Recreation Area (State Highway #12)



4 Go Straight on State Highway #12



5 0.9 miles, cross Wahweap Creak. Often has flowing water, but usually not difficult to cross. Camp spot on the right before the river



6 4.9 miles, pass the Wiregrass Canyon trailhead. Optional hike down to the river.



7 10.1 miles, stay left at split in road to stay on State Highway #12. Right goes to Warm Creek Bay VIA Crosby Canyon Road.



8 12.8 miles, turn right onto 300. Blue road marker on the right of the road. Information sign at the intersection has fun facts.



9 You should see a small ranching area on the left after a few minutes, then cross a small wash



10 13.8 miles, turn right onto 340. Sign says Grand Staircase-Escalante National Monument



11 Blue road marker says Road 340. Brown sign says "All Vehicles and Bicycles must stay on roads."

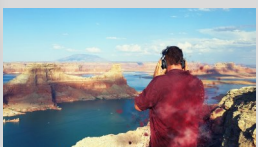


From Alstrom Point facing South East



Big hoodoos are found in a couple of locations

Numbers on the map correspond to the numbers on the directional pictures. See Video, Pictures and more information at [Alstrompoint.com](http://Alstrompoint.com)



Chuck enjoying the view



Lake levels can change the view from year to year

Directions to Alstrom Point (cont.)



11. 18.0 miles, turn right onto Road #264. Sign says "Alstrom Point 5 miles" Stay straight on this road for 5 miles.



12. 22.9 miles find the first overlook on left. 2wd vehicles should stop here. High clearance can continue on slickrock to 3rd arrow



13. Follow cairns at the top of the hill (no clear trails on the slick rock) to explore the many view points. See map below of Romana Mesa.



**Yellow:** First overlook, good campsite, 2wd accessible  
**Cyan:** Secondary overlooks, good campsites  
**Red:** Best overlook for pictures of Gunsight Butte

More Thoughts

Alstrom Point is one of the best overlooks of Lake Powell, and can be reached with a reliable vehicle if you are prepared.

Bring enough food and water in case you have to spend the night.

Road Conditions change quickly, so plan ahead and check the weather and with National Park Service.

Glen Canyon NRA  
tel: 928.608.6200

Transport Towing  
tel: 928.645.8117

Book a tour at  
[DiscoverTheCanyons.com](http://DiscoverTheCanyons.com)